

SuperShuttle Features

Pneumatic operation
Replaceable wear plate

Service Requirements

Electrical: None
Air: 100 PSI

The Quanex SuperShuttle is designed to meet your specific glass shop needs including:

- Hand-held pneumatic tool for a continuous process
- Spacer width adjustment can accommodate sizes from 3/16" to 15/16"
- Fixed setback distance for straight-line application
- Circular punch for corner notching
- Cutting blade for final spacer cut-off
- Replaceable wear plate



Equipment Solutions

Super Spacer® SuperShuttle

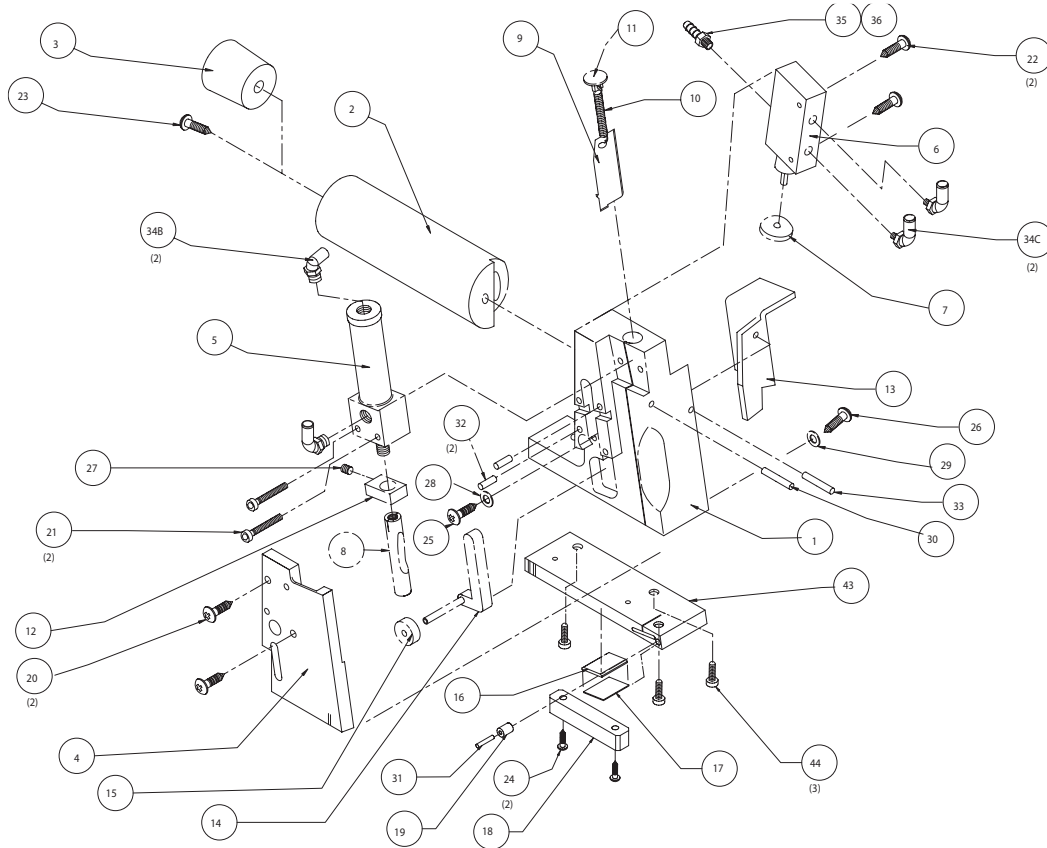
SPARE PARTS ORDER FORM
Super Spacer® SuperShuttle Spacer Applicator
Tool # 001081

Draw Ref.	Part #	Description	Qty.
1		Body	
1c	001097	Body (Straight)	
2	001099	Handle	
4		Faceplate	
4b	001102	Faceplate, Standard/ Premium	
5	001108	Cylinder	
6	001109	Valve	
7	001110	Trigger Button	
8	001112	Notcher Punch	
9	001113	Cutting Blade	
10	001114	Spring	
11	001115	Spring Button	
12	001116	Punch Collar	
13	001117	Cutting Blade Trigger	
14	001119	Pressure Wheel Holder	
15		Pressure Wheel	
15a	001120	Pressure Wheel (Standard/ Premium Straight)	
15b	001121	Pressure Wheel (Premium Plus Straight)	
16	001126	Cutting Pad	
17	001127	Backing Plate	
18		Guide Block	
18e	001130	Guide Block, 3/16" offset	

Draw Ref.	Part #	Description	Qty.
18f	001131	Guide Block, 1/4" offset	
19		Guide Roller	
19a	001132	Guide Roller (Standard/ Premium)	
19b	001133	Guide Roller (Premium Plus)	
20	001134	Screw, Faceplate Mounting	
21	001136	Screw, Cylinder Mounting	
22	001137	Screw, Valve Mounting	
23	001137-23	Screw, Handle Mounting	
24		Screw, Guide Block Mounting	
24b	001134	Screw, Guide Block Mounting, 3/16"	
24c	001138	Screw, Guide Block Mounting, 1/4"	
25	001139	Screw, Pressure Wheel Adjusting	
26	001140	Screw, Trigger Stop	
27	001141	Screw, Set, Punch Collar	
28	001142	Washer, Pressure Wheel Adjusting	
29	001143	Washer, Trigger Stop	
30	001144	Dowel, Cutting Blade Pivot	
31	001145	Dowel, Guide Roller	
32	001146	Dowel, Faceplate Alignment	

Draw Ref.	Part #	Description	Qty.
33	001144	Dowel, Cutting Blade Pivot	
34		Fitting, Elbow	
34b	001149	Fitting, Elbow (Cylinder)	
34c	001150	Fitting, Elbow (Valve)	
35	001151	Fitting, Hose Barb	
36	001152	Gasket	
37		Hose	
37a	001479	Hose, Black	
37b	001154	Hose, Gray	
38	001156	Coupler, Male	

Draw Ref.	Part #	Description	Qty.
39	001157	Coupler, Female	
43	001163	Wear Plate	
44	001164	Screw, Wear Plate Mounting	
45	001473	Screw, Pressure Wheel Adjusting	
NA	005010	200' 1/4" x 1" 85 Shore A +/-5 Durometer silicone rubber	
NA	005012	10' 1/4" x 1" 85 Shore A +/-5 Durometer silicone rubber	



Rev. #	Revisions Made	Rev. Date
1	Added part numbers (10' 005012 and 200' 005010)	05-2016